



## Bathing establishment Fact Sheet

Bathhouse name	La Perla
Address	Viale Bernardini n. 604
City	Lido di Camaiore (Lu)
Contacts	+39 0584 617464
Website	<a href="https://www.laperlarisacca.com/">https://www.laperlarisacca.com/</a>

**TESTED BY:** [Handy Superabile - Social Promotion Association](#) in summer 2023

**Please note** The following information refers to the verification date shown at the bottom of each card. **The Association** is not responsible for any significant changes made by the property after the visit.

### Summary

Bathing establishment Fact Sheet .....	1
Arrival at the facility .....	2
Private/public parking.....	2
Pathway from the parking lot to the main entrance .....	2
Reception.....	3
Bar/restaurant .....	4
Internal Pathways and common services.....	5
Internal Pathways .....	5
Toilet and shower accessible to guests with reduced mobility .....	6
Changing room .....	7
Beach.....	7
Children's play area .....	8
Swimming pool .....	9
Doctors' Offices/Healthcare Facilities .....	9

Project carried out with the contribution of the





## Arrival at the facility

### Private/public parking



Presence of private parking	YES
Type of private car park	asphalt
Presence of parking space reserved for people with disabilities	NO
Public parking nearby	YES
Type of public car park	asphalt



### Pathway from the parking lot to the main entrance





Pathway from the car park to the entrance	By means of a 1 cm step and a ramp 186 cm long, 152 cm wide and a 5.5% slope with subsequent narrowing to 97 cm and a slight difference in height of 1 cm
There are markers and tactile maps	NO
Usable door/entrance width	more than 90 cm
	

## Reception

Umbrella booking system	<input checked="" type="checkbox"/> Via web <input checked="" type="checkbox"/> By phone <input checked="" type="checkbox"/> On-site
Presence of multilingual staff	YES
Presence of plant plan with key to services available	NO
Presence of visuo-tactile map	NO
Bulletin board/information panels at an average height of 130 cm in a well-lit area	YES



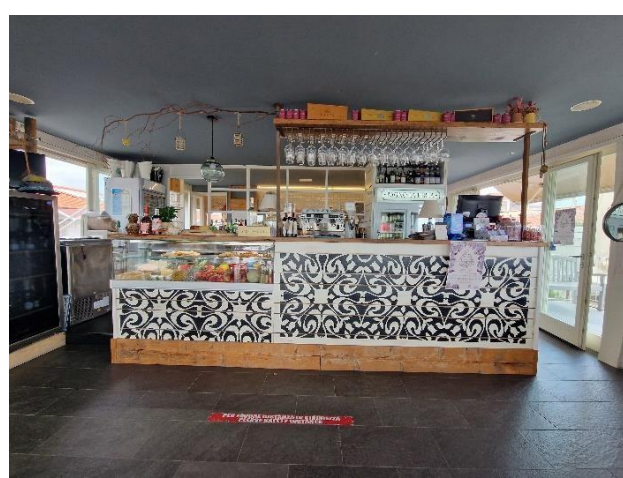


and font size at least 14 dpi with a contrast ratio greater than 4.5:1	
The staff attended training courses on welcoming people with different disabilities	NO

### Bar/restaurant

Type of venue	Bar/restaurant
Access to the premises	By means of a ramp 186 cm long, 152 cm wide and a gradient of 5.5 % and a threshold step of 0.5 inside and 1.5 outside
Usable door/entrance width	more than 90 cm
Bar counter	more than 100 cm
Types of tables	with central support that can hinder the approach with the wheelchair – tables arranged on the outside with 4 legged with a space of 69 cm underneath
Space underneath the tables from the floor	more than 65 cm
Multilingual menu	NO
Menus with large print fonts	NO
Braille menu	NO
Table service for people with disabilities	YES
Availability of gluten-free food	<input type="checkbox"/> bread <input type="checkbox"/> pasta <input type="checkbox"/> biscuits <input checked="" type="checkbox"/> ice cream <input type="checkbox"/> Pre-packaged foods



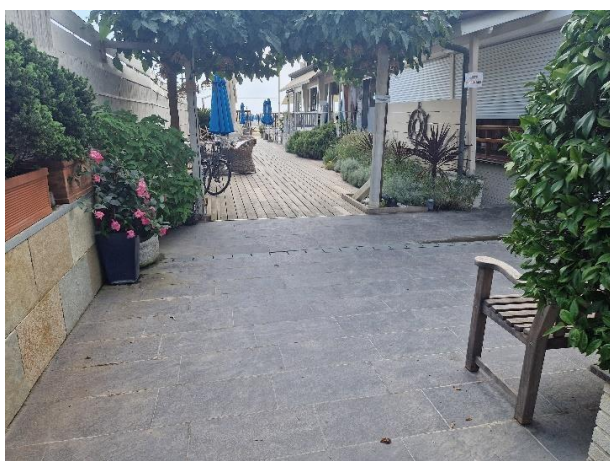


## Internal Pathways and common services

### Internal Pathways



Indicate whether the pathways connecting the entrance to the beach are flat or with ramps in addition to those already described

Obstacle-free paths







**Toilet and shower accessible to guests with reduced mobility**

Number <b>of toilets</b> accessible/usable by guests with reduced mobility	1
Access to the premises	via ramp length 35 cm, width 92 cm, slope 20 %
Usable width of the entrance door	more than 90 cm
Toilet height	51 cm
Open front toilet seat	YES
Support handles	Missing
Flexible hand shower at the side of the toilet	NO
Free space on the sides of the toilet	left 64 Cm right 21 Cm frontal more than 90 cm
Electric doorbell/phone	YES
Washbasin with space underneath for wheelchair	71 cm
Height from the ground on the bottom edge of the mirror	119 cm
Baby changing table	YES
	





Accessible <b>shower</b> available for guests with reduced mobility	SI separated from the toilet room
Access to the shower room if separated from the toilet room	via ramp length 362 cm, width 94 cm, gradient 5.5 % and access step 20 cm high
Useful width of the door/entrance gate if separated from the toilet room	90 cm
Shower type	open-type
Floor-level shower	YES
Shower chair	missing
Grab bar	Missing
Presence of shower head or ups and downs	fixed shower head
Electric doorbell/phone	NO
	


### Changing room

Accessible changing room available for guests with reduced mobility	NO
---	----

### Beach





Type of beach	sand
Access to the beach	Flat
Walkway to reach the umbrellas	YES
Type of walkway	wood
Walkway width	100 cm
	
Removable Platform between the walkway and the umbrella station to facilitate the passage and parking wheelchair	NO
Amphibious beach chair available for helping people with reduced mobility to enjoy swimming (owned by the establishment or by association)	YES

### Children's play area

Children's play area	Not detected
There are games for children with reduced mobility	NO





### Swimming pool

The property has a swimming pool	NO
----------------------------------	----

### Doctors' Offices/Healthcare Facilities

Hospitals near the facility	Ospedale Versilia SS 1, 335, 55049 Camaiole LU Telephone: 0584 6051
Other Healthcare Facilities	<b>ASL Health District n. 12</b> Viareggio Via Sant'Elme, 30 Tel. 058483873 <b>Croce Verde</b> Viale Italico, angolo via Risorgimento Tel. 058484013 Free First Aid for white codes <b>Night medical service</b> Tel. 0584 83896 (h. 20-8) <b>Misericordia</b> Via P. I. da Carrara, 32 Tel. 0584752133/0584 752149 <b>Medical service "San Camillo" Nursing Home</b> Via P.I. da Carrara, 37 Tel. 0584 7391 <b>Dialysis service</b> at Croce Verde Viale Italico, angolo via Risorgimento Tel. 058484013 affiliated with AUSL

TESTED BY: **Handy Superabile Social Promotion Association in summer 2023**

